

# WOMEN IN THE TRANSPORT SECTOR

## KEY FACTS

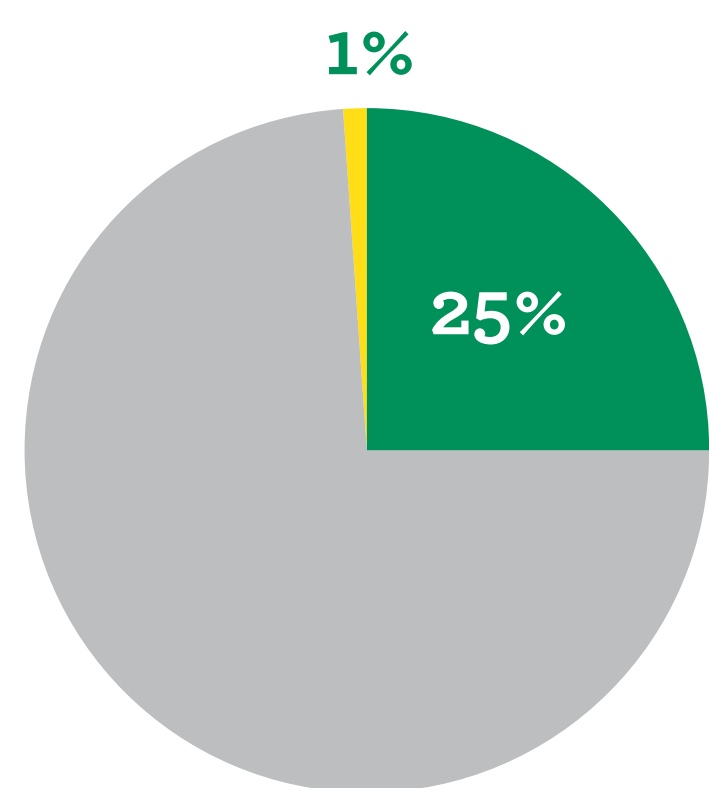


2%

of workers in the road transport sector are women

Source: Road Haulage Association

- 25% of female truck drivers are over the age of 60
- while 1% are under the age of 25



Source: Horsepower



Only

30%

of senior fleet managers in the UK are women

Source: TomTom Telematics

The number of female truck drivers is less than 1% of total truckers in the UK



Source: Department for Work & Pensions

## OUTSTANDING WOMEN IN THE ROAD TRANSPORT SECTOR



### Lesley O'Brien

Partner, Freight Link Europe LLP

Lesley has over 30 years' managerial experience in the UK and international transport industry. She is the only female Road Haulage Association (RHA) board member.



### Beverley Bell

Senior Traffic Commissioner for Great Britain

Beverley is the UK's first female Senior Traffic Commissioner. She manages the licensing of HGVs and PSVs in the UK. Lesley is also a fellow of the Chartered Institute of Logistics and Transport, and the Society of Operations Engineers.



### Fiona Kerr

Managing Director, First Glasgow

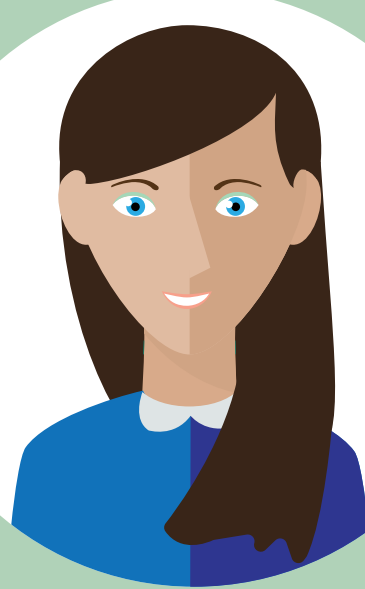
Since 2013, Fiona has achieved a 50/50 gender split in her executive director team. She won 'Woman of the Year' award at the 2015 FTA everywoman in Transport & Logistics Awards.



### Michele Dix

CBE, Managing Director, Crossrail 2

Michele is the only woman on the Transport for London Chief Executive board and winner of the 'Spirit of everywoman' award at the 2015 FTA everywoman in Transport & Logistics award. Michele is also Managing Director of Crossrail 2 responsible for its funding and development.



### Laura Moran

Commercial Vehicle Director, Hertz

Laura manages a fleet of 6000+ vehicles. She sits on the BVRLA Commercial Vehicle Committee and contributes to a number of other industry initiatives.



### Jenny Hooper

Managing Director, Independent Freight

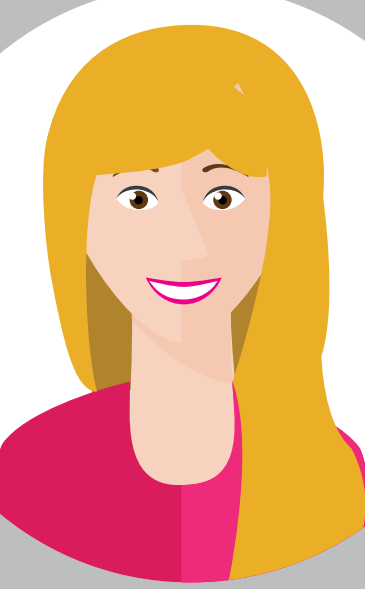
In 2004, Jenny co-founded Independent Freight. The company now has a six-figure annual turnover. Jenny is also involved in a number of women's business organisations, and won the 'Best Leader' award at the 2015 FTA everywoman in Transport & Logistics Awards.



### Sarah Copley

Commercial Director, National Express

At National Express, Sarah's varied responsibilities include managing a large team of staff, pricing and dynamic yield management strategies, network and timetable development, developing new products and driving the business development strategy.



### Nathalie Axon and Jan Carter

Co-founders, Horsepower

Truck drivers Nathalie and Jan setup Horsepower, the training school for women looking to get into the haulage business, in 2013. Their initiative has received recognition from the Road Haulage Association (RHA).

